

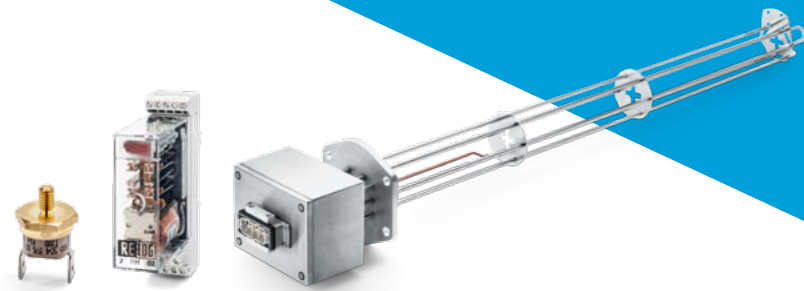
# Image brochure

## They're everywhere you look.



# Part of the bigger picture.

With every fresh breeze that sweeps across the country, changing the face of the energy-supply sector as it goes, you'll be sure to find relay technology from eaw. Not forgetting, of course, the thermal switches and sensors that keep wind turbines in motion out on stormy seas. And as for power stations, we can always count on a reliable energy supply thanks to control and monitoring technology relays.



Liquid temperature control with integrated thermal switch and RELOG all-or-nothing relay – a global favourite for over 50 years.

# Switchboards for mobility.

Cars are moving electronic systems containing thousands of components that have to be able to function in a secure network. This is where eaw thermal relays really come into their own. You'll also find eaw on board in commercial vehicles, cranes, trams, tubes, high-speed trains, planes and even ships, making sure that people and cargo all make it to their destinations.



eaw thermal switches and sensors are suitable for use at temperatures of between  $-30^{\circ}\text{C}$  and  $+390^{\circ}\text{C}$  – with or without an external power supply.



# Everyday components.

Without eaw, our kitchens would be cold and the oven would be off in no time. Switches and sensors come into play to make sure washing machines and dishwashers finish their cycles, warm water flows out of the tap and hot espresso is ready and waiting in the coffee maker. Quite simply, the ultra-reliable relays from eaw can be found pretty much everywhere you look, meaning your life can run as smoothly as it should.



Small but powerful (up to 16 A) and designed for a diverse range of customer-specific applications: eaw thermal switches and sensors.



If you need a solution for an application we haven't covered here, let us know and we'll be delighted to design the perfect product.



# Thermal switches and sensors.

## Measuring, controlling, switching.

From microwaves to washing machines and gas boilers to wind turbines: thermal switches and sensors can be found wherever temperatures need to be measured and functions need to be controlled or switched. Device manufacturers, the automotive industry, and companies specialising in rail vehicles, plant engineering and mechanical engineering are just some of the many satisfied customers who know they can count on products from eaw Relais Technik. After all, they have been proving their worth for decades, they are continually adapting to new challenges, and their measuring, controlling and switching capabilities are second to none.



## Essential for functionality and durability.

Whether it's the overheat protection in a coffee maker or the starter unit for a refrigerator motor, these are just a couple of the many everyday applications that simply couldn't function without reliable thermal switches and sensors. And when it comes to ensuring that the devices and systems housing this equipment can enjoy a long service life, operational reliability is key. This all comes down to a commitment to ensuring premium-quality products and brands. For eaw, this is all simply a matter of course.



## Below zero to 400 degrees.

Thermal switches and sensors have to be capable of fail-safe operation under a whole host of different conditions. With their natural operating environment including cold, hot and humid locations, it makes sense that the robust eaw technology can also be found on oil rigs out in the North Sea. The sheer strength of these designs is guaranteed thanks to both our expertise and our production benchmark tests.

# Relays for control and monitoring technology.

## Always in safe hands.

For operators in industrial plants, power stations and energy networks, production or supply disruptions are simply out of the question. Countless sites depend on reliable all-or-nothing relays to ensure that everything runs according to plan, and signal relays to raise the alarm if something goes wrong. eaw has 50 years of experience with this relay technology, offering constant developments to its product range and maximum support to safety-critical applications.



## The RELOG system classic.

RELOG all-or-nothing relays have been proving their worth for decades in applications where durable and robust functionality is of the essence, including railway systems, rail vehicles, ship, lift and various other machine controls, cement works, sewage treatment plants and industrial facilities. With a service life of over 20 years, electromechanical functionality proven a million times over, and their unique drop indicator, RELOG relays have proven to be virtually indestructible components in a wide range of functional systems.

## Signals and discrepancies.

The range of relays for control and monitoring technology also includes:

- Signal relays for indicating operating states or faults
- Alarm signal systems for multiple signals in a compact device
- Discrepancy switches for indicating and monitoring switch settings

But if you're looking for something that doesn't seem to be covered here, then just let us know. We will be delighted to make the necessary adjustments and modifications or even design it for you from scratch.



eaw signal relays are the reliable choice when it comes to indicating a fault, and not just for energy suppliers and network operators.



Even eaw products have to be put to the test. After all, this is the way we ensure their superior reliability.

## Functional testing for thermal relays.

### Resilient and powerful.

The LFTR1 functional test bench offers a testing environment for thermal relays under real-life conditions, designed for:

- Incoming goods inspections
- Functional tests
- Endurance tests

This is all designed to allow eaw Relaisstechnik to ensure the quality of its in-house production whilst also offering a testing platform as a complete installation to interested parties.

### LFTR1 highlights:

- Logging of regulatory electrical operating values and service life parameters
- Test conditions in line with DIN EN 60730-1
- Testing environment under real-life conditions
- Fully automatic, standalone operation
- Central, computer-assisted animation (optional)
- Choice of up to 230VAC or 220VDC
- Maximum load of 16 A
- Testing area temperature range from -20°C to 180°C

# Low-voltage switchgears.

### Resilient and powerful.

The well-rounded range from eaw Relaisstechnik comprises a wide variety of low-voltage switchgears, including powerful air-break contactors, auxiliary contactors, thermal overcurrent relays, capacitor contactors and vacuum contactors.

All of our devices offer remarkable reliability and a long service life that really set them out from the crowd. This combines to ensure that isolating, safeguarding and switching processes function smoothly in every motor environment.

### Powerful for serious applications.

The diversity of the eaw range makes it suitable for a broad range of functions and motor types. Typical areas of application include the raw materials, chemicals and petroleum industries, metallurgy, heavy engineering, shipbuilding, oil rigs, mining and rail operation. So whatever your requirements, eaw is sure to have the perfect solution.



The benefits of the vacuum switching system for our power contactors include a long service life in systems with a high switching frequency.



In control and regulation technology systems, measuring relays from eaw guarantee reliable monitoring of areas such as networks and industrial facilities.

# Raising the bar. Providing fresh impetus.



## Dialogue promotes development.

Many of eaw's products set proven benchmarks, and these are constantly being redeveloped and improved. Similarly, we are always in the process of developing new solutions to suit our customers' specific requirements. In doing so, we have learned that the best way to achieve quality results is to engage in constructive dialogue – no matter whether we're dealing with large-scale production runs or exclusive, one-off units. At the end of the day, it's the quality of the solution we're interested in, not the quantity.

## Rapid and flexible switching.

As renowned specialists in relay technology, we understand how important it is to appreciate the potential for new applications and come up with appropriate solutions quickly. Our level of imagination is often put to the test, but we have proven ourselves time and time again. In this respect, we will be happy to take on any new challenges you'd like to send our way.

## A trusting partner.

A large number of our customers have been working with eaw Relaisstechnik for many years. They have confidence in our sustainable solutions and our perfect combination of extensive experience and forward-thinking attitude. Our ability to build positive relationships probably has a large part to play, too. Our next question, then, is how can we help you today?



# Made in Germany. Used the world over.



## From development and production right through to distribution.

Every stage of our value-added chain is completed in-house. After all, this is the only way we can guarantee the premium quality of our products and services. eaw Relais-technik products really can wear the “Made by eaw” label with pride, which is synonymous with sophisticated switch technology.

## Relay technology since 1926.

“Elektro-Apparate-Werke Berlin” – or Berlin Electrical Appliance Works – was originally founded by AEG with the intention of manufacturing relays right from the outset. And despite eaw branching out into a whole host of different fields of electrical engineering during its interim years as an East German combine with 8000 employees, this tradition has still held fast to this day. Since 1993, the company’s decades of old roots have come together to form eaw Relais-technik GmbH. Its expertise in this domain has built up over the years and now also includes pioneering thermal sensor technology. All from a single manufacturer with a range comprising thermal, electromechanical and electronic relays.

## Quality products for China.

Other companies import their products from the Far East; we take our own and export them in the opposite direction. These long-standing supply relationships also extend to the European, American and African markets, as first-rate relay technology from Berlin is highly prized the world over. After all, there aren’t many companies with 90 years of expertise to their name.



The banks of the River Spree were home to “Elektro-Apparate-Werke Berlin” right from the start.

# Here's what our customers have to say:

"As our long-standing, reliable partner, we can always count on eaw Relaistechnik for a quick and flexible service."

"Trains have got to run, and the heating and air-conditioning have to work. eaw contactors keep everything running smoothly and are always the perfect choice."

"We operate on an international scale and really value the global support and the range of customised solutions on offer."

"Our company has worked with eaw for decades and we are so impressed with their products that we have virtually every single one of them installed."

"We simply couldn't cope without our energy supply. The RELOG system guarantees that we can always deliver."

"We are constantly on the lookout for ways to improve the optimal heating levels in vehicles, and the diverse range of premium-quality products from eaw is helping us to do exactly that."

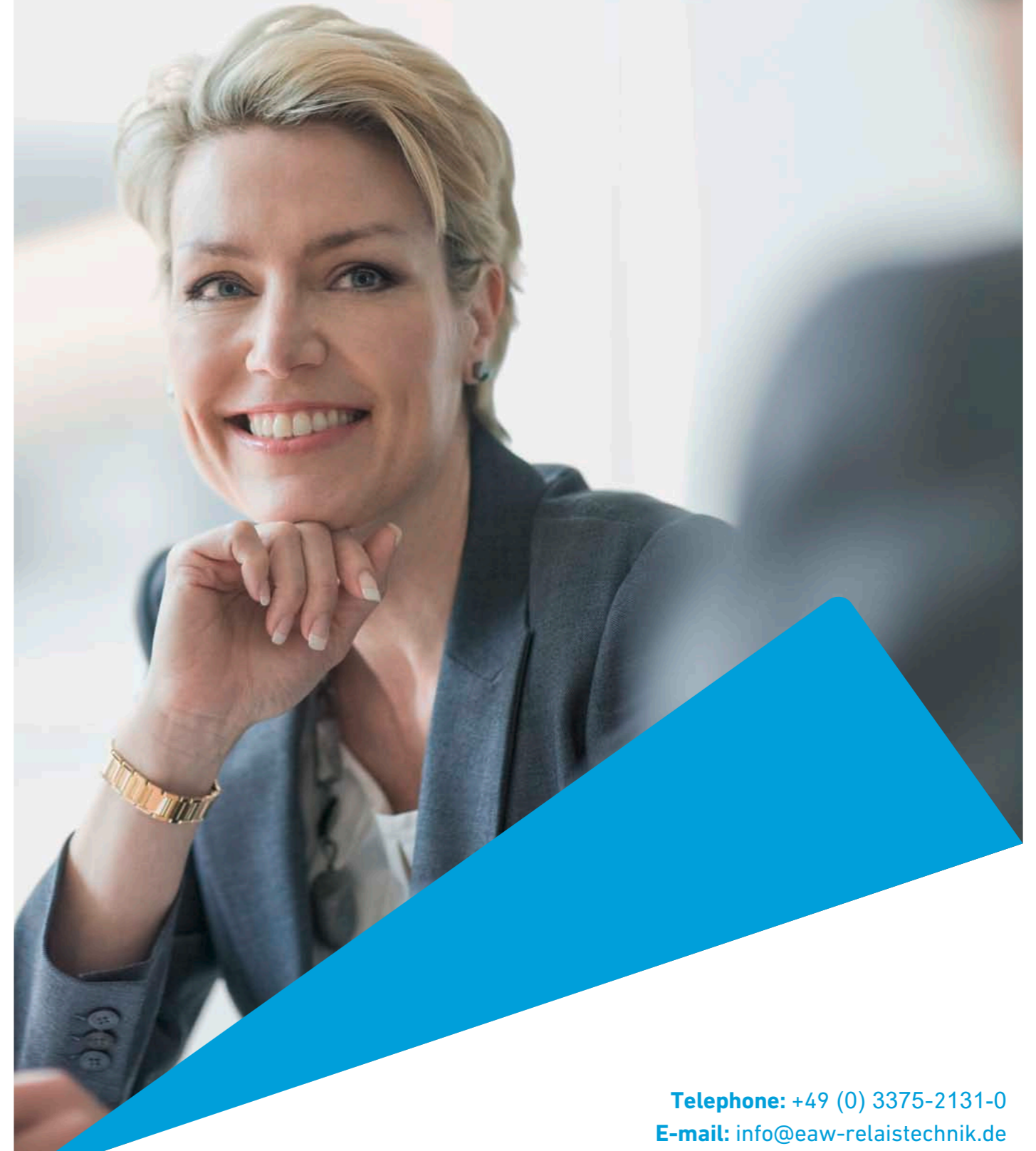
"eaw thermal switches even function under extreme conditions. This is an essential factor for us and one we know we can rely on."

"Credibility is the cornerstone of our brand. We therefore expect the same from our suppliers."

"Signal relays are critical to our business when it comes to safety, so we have a zero-tolerance policy for defects. With eaw, we know we're in safe hands."

"Through working with eaw, we often come up with solutions that we never would have thought of on our own. It's fantastic to benefit from their experience. Thank you, eaw!"

## So, what do you say?



Telephone: +49 (0) 3375-2131-0  
E-mail: [info@eaw-relaistechnik.de](mailto:info@eaw-relaistechnik.de)

# A click above.

eaw is a developer, manufacturer and distributor of innovative and reliable relay technology. Our range can be found in the automotive, energy-supply and mining industries, rail networks, household appliances, heating and air-conditioning technology, and much, much more.

So when it comes to developing customised solutions both for and with our customers, not to mention setting the bar for standards, we have years of experience behind us. All of the premium quality you'd expect from anything with a "Made in Germany" label.



eaw Relaistechnik GmbH  
Dorothea - Erxleben - Straße 4  
15711 Königs Wusterhausen  
Germany

Telephone: +49 (0) 3375- 2131 0  
Fax: +49 (0) 3375 2131- 200  
[info@eaw-relaistechnik.de](mailto:info@eaw-relaistechnik.de)  
[www.eaw-relaistechnik.de](http://www.eaw-relaistechnik.de)